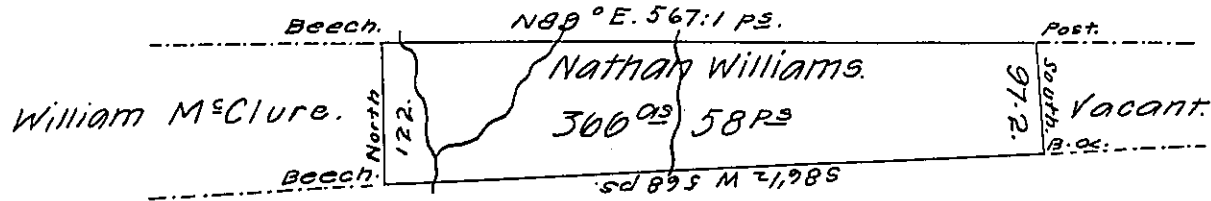


Donation Surveys.



Donation Surveys.

*situate on the East Side of French Creek in Allegheny County Con-
taining 366 Acres 58 perches and allowance of Six p^c Cent for Roads
&c. Surveyed the 22nd day of August 1799 for Nathan Williams on his
actual settlement and Improvement dated the 24th day of May,
1799.*

John Power, D^y S^c

*To Daniel Brodhead, Esquire,
Surveyor General.*

*IN TESTIMONY that the above is a copy of the original remaining on file in
the Department of Internal Affairs of Pennsylvania, made
conformably to an Act of Assembly approved the 16th day of
February, 1833, I have hereunto set my Hand and caused
the Seal of said Department to be affixed at Harrisburg,
this twenty fifth day of September, 1906.*

George R. Johnson
Secretary of Internal Affairs.